

Faculty feedback 19-20

I CURRICULUM DESIGN AND DEVELOPMENT

- 1 University is taking care to ensure the currency and relevance of the syllabus
- 2 Employability is given weightage in curriculum design and development
- 3 I am given enough freedom to contribute my ideas on curriculum design and development.
- 4 The system followed by the University for the design and development of curriculum is effective.
- 5 The curriculum has been updated from time to time.

II TEACHING, LEARNING, EVALUATION & RESEARCH

- 1 The admission process adopted by the College is effective.
- 2 The College is able to attract meritorious students.
- 3 Student centered learning resources are available in the College.
- 4 The faculty are updating their knowledge and skills.
- 5 The class work is taking place as per schedule.
- 6 The Central Library is a major source of information.
- 7 The library is utilized optimally by the faculty.
- 8 The library is utilized optimally by the students.
- 9 The library is managed effectively.
- 10 The timings of the Library are convenient.
- 11 The procedure followed for acquiring new books and journals ensures right titles and journals in the library.
- 12 The teaching aids in the department are sufficient and up to date.
- 13 The teachers are supported with adequate learning resources.
- 14 The teachers are encouraged to carry out research.
- 15 The teachers are encouraged to organize seminars/workshops/ symposia/conferences.
- 16 The teachers are encouraged to participate in seminars /workshops/ symposia/conferences.
- 17 The teachers are encouraged to undertake extension service programmes.
- 18 The teachers are encouraged to establish linkage with other institutions.
- 19 The teachers are encouraged to take-up consultancy services.
- 20 The merit of the teachers is recognized.
- 21 The examination system followed by the College is effective.
- 22 The evaluation system followed by the College is effective.

III INFRASTRUCTURE

- 1 The class rooms and furniture available are adequate.
- 2 The toilets are sufficient for faculty and students.
- 3 The buildings and furniture are well maintained.
- 4 The labs are adequately equipped
- 5 The infrastructure available in the department is optimally used.
- 6 Water resources are adequately provided.
- 7 Safe drinking water is available.
- 8 Sports infrastructure is adequate.

IV GOVERNANCE

- 1 The administration is sincerely putting efforts for the development of the institution.
- 2 The administration is accessible.
- 3 The quality initiatives taken up during the last academic year are contributing for improvement.
- 4 The faculty are given freedom to express their opinions.
- 5 The IQAC is working well for promoting quality in the institution.
- 6 The College is providing adequate opportunities and support to the faculty.

I CURRICULUM DESIGN AND DEVELOPMENT

	SA	SA%	A	A%	N	N%	D	D%	SD	SD%	Total	
1	5	10.9	28	60.9	8	17.4	3	6.52	2	4.35	46	100
2	5	10.9	15	32.6	18	39.1	6	13	2	4.35	46	100
3	3	6.52	12	26.1	12	26.1	16	34.8	3	6.52	46	100
4	4	8.7	22	47.8	15	32.6	3	6.52	2	4.35	46	100
5	9	19.6	26	56.5	8	17.4	1	2.17	2	4.35	46	100

II TEACHING, LEARNING, EVALUATION & RESEARCH

	SA	SA%	A	A%	N	N%	D	D%	SD	SD%	Total	
1	5	10.9	34	73.9	6	13	0	0	1	2.17	46	100
2	4	8.7	19	41.3	18	39.1	4	8.7	1	2.17	46	100
3	7	15.2	33	71.7	4	8.7	2	4.35	0	0	46	100
4	19	41.3	22	47.8	3	6.52	2	4.35	0	0	46	100
5	15	32.6	26	56.5	2	4.35	3	6.52	0	0	46	100
6	23	50	20	43.5	2	4.35	1	2.17	0	0	46	100
7	4	8.7	35	76.1	3	6.52	4	8.7	0	0	46	100
8	9	19.6	29	63	6	13	2	4.35	0	0	46	100
9	23	50	22	47.8	1	2.17	0	0	0	0	46	100
10	18	39.1	25	54.3	3	6.52	0	0	0	0	46	100
11	8	17.4	29	63	5	10.9	4	8.7	0	0	46	100
12	4	8.7	26	56.5	12	26.1	3	6.52	1	2.17	46	100
13	4	8.7	29	63	11	23.9	2	4.35	0	0	46	100
14	6	13	27	58.7	8	17.4	2	4.35	3	6.52	46	100
15	11	23.9	27	58.7	7	15.2	0	0	1	2.17	46	100
16	5	10.9	26	56.5	9	19.6	4	8.7	2	4.35	46	100
17	3	6.52	25	54.3	15	32.6	2	4.35	1	2.17	46	100
18	3	6.52	25	54.3	12	26.1	4	8.7	2	4.35	46	100
19	2	4.35	11	23.9	26	56.5	5	10.9	2	4.35	46	100
20	4	8.7	23	50	13	28.3	3	6.52	3	6.52	46	100
21	4	8.7	25	54.3	13	28.3	3	6.52	1	2.17	46	100
22	4	8.7	29	63	9	19.6	1	2.17	3	6.52	46	100

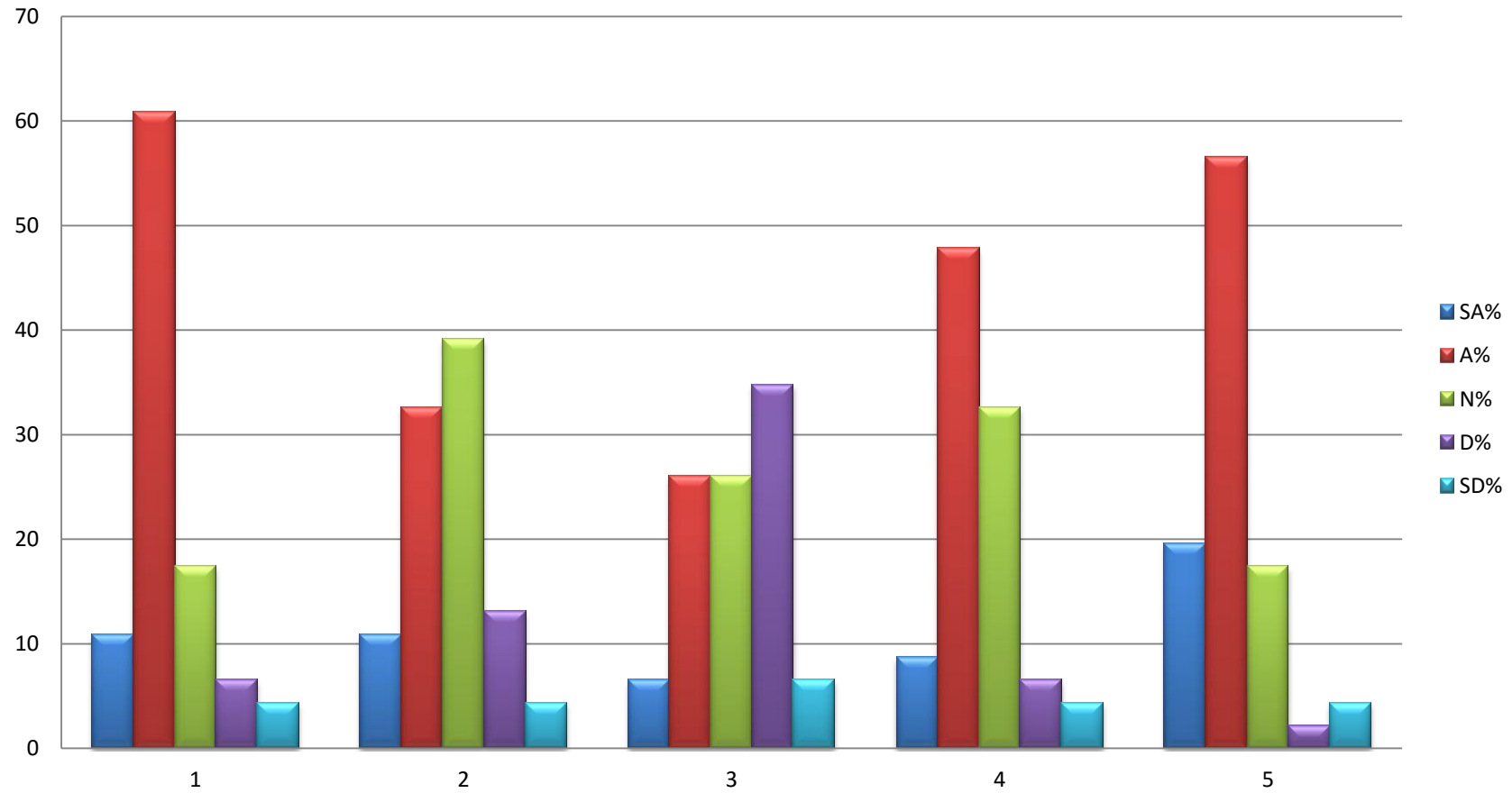
III INFRASTRUCTURE

	SA	SA%	A	A%	N	N%	D	D%	SD	SD%	Total	
1	0	0	13	28.3	11	23.9	18	39.1	4	8.7	46	100
2	0	0	12	26.1	16	34.8	13	28.3	5	10.9	46	100
3	0	0	15	32.6	16	34.8	11	23.9	4	8.7	46	100
4	2	4.35	11	23.9	25	54.3	7	15.2	1	2.17	46	100
5	4	8.7	29	63	8	17.4	4	8.7	1	2.17	46	100
6	1	2.17	20	43.5	11	23.9	10	21.7	4	8.7	46	100
7	3	6.52	24	52.2	12	26.1	4	8.7	3	6.52	46	100
8	0	0	11	23.9	13	28.3	19	41.3	3	6.52	46	100

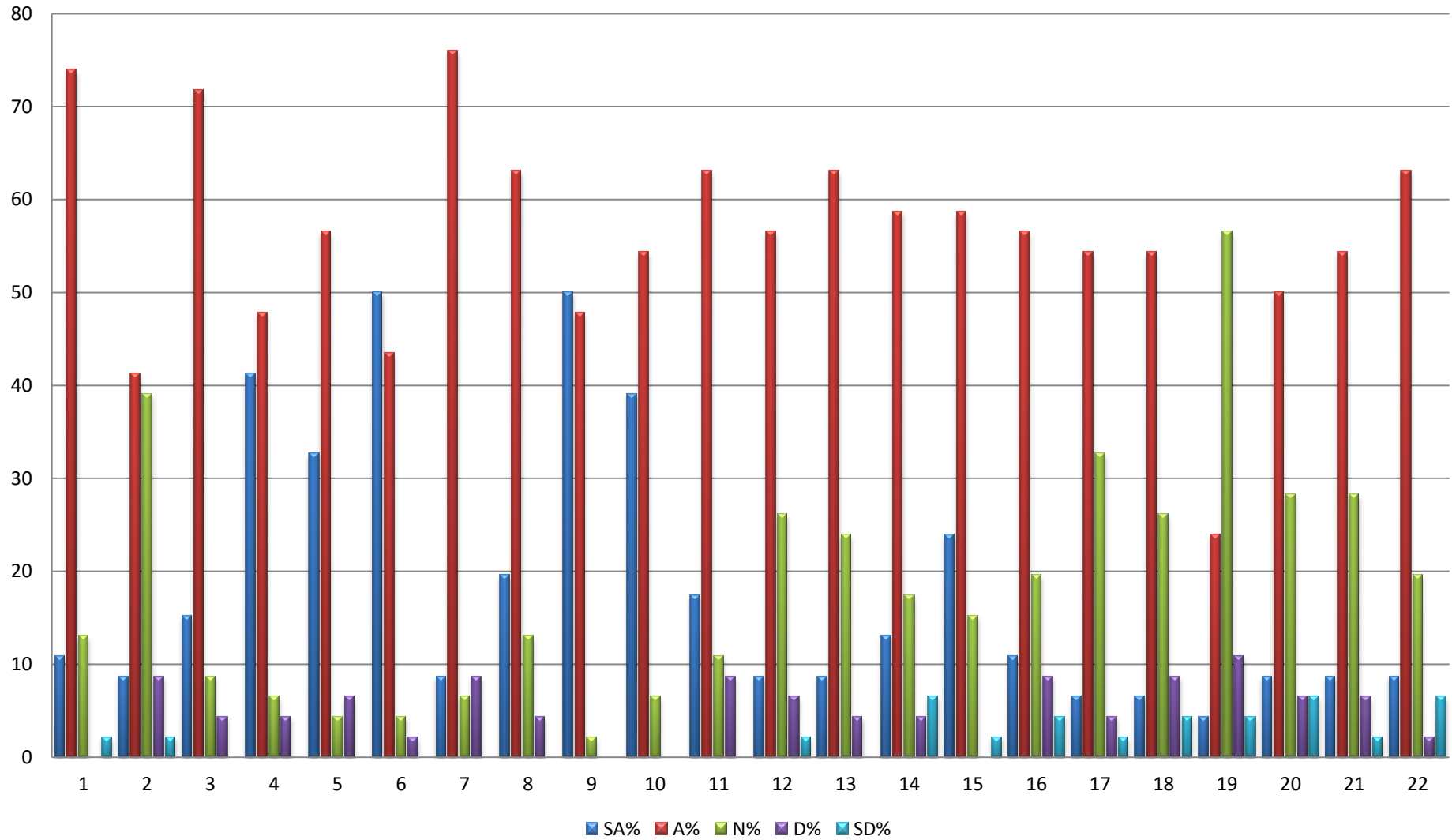
IV GOVERNENCE

	SA	SA%	A	A%	N	N%	D	D%	SD	SD%	Total	
1	6	13	25	54.3	7	15.2	4	8.7	4	8.7	46	100
2	2	4.35	21	45.7	13	28.3	6	13	4	8.7	46	100
3	2	4.35	28	60.9	11	23.9	3	6.52	2	4.35	46	100
4	5	10.9	18	39.1	10	21.7	7	15.2	6	13	46	100
5	6	13	30	65.2	7	15.2	2	4.35	1	2.17	46	100
6	3	6.52	17	37	18	39.1	4	8.7	4	8.7	46	100

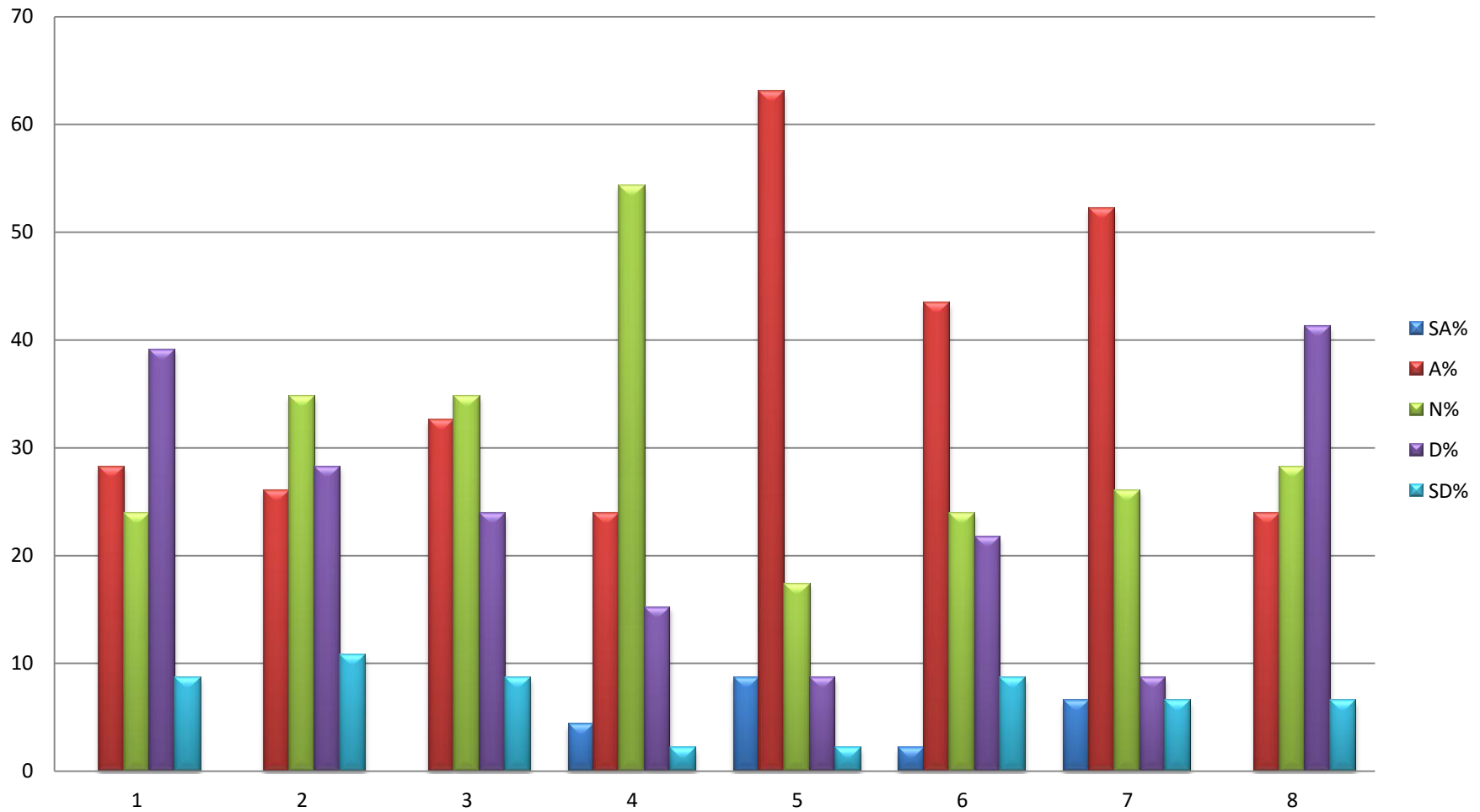
CURRICULUM DESIGN AND DEVELOPMENT



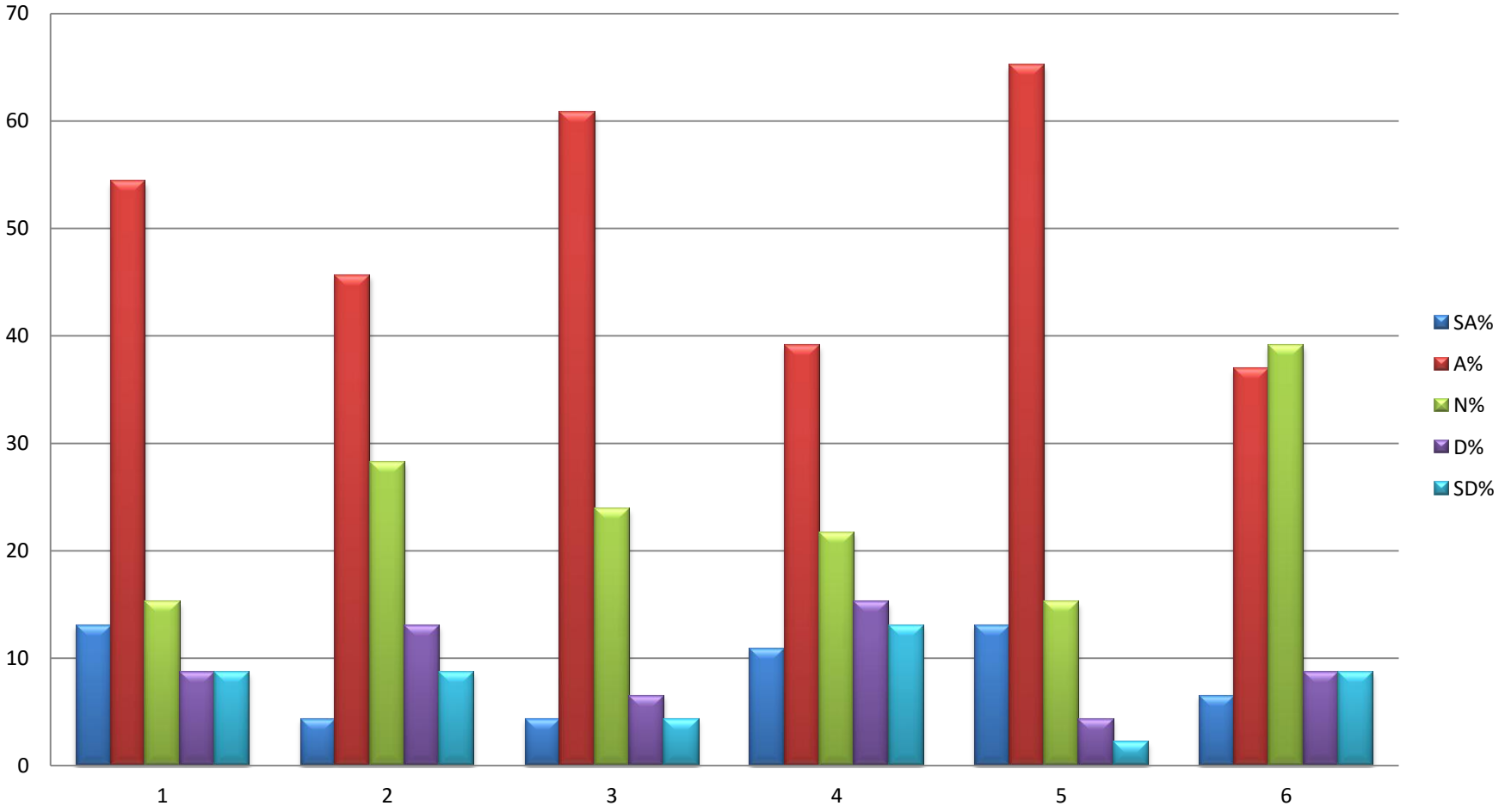
TEACHING, LEARNING, EVALUATION & RESEARCH



INFRASTRUCTURE

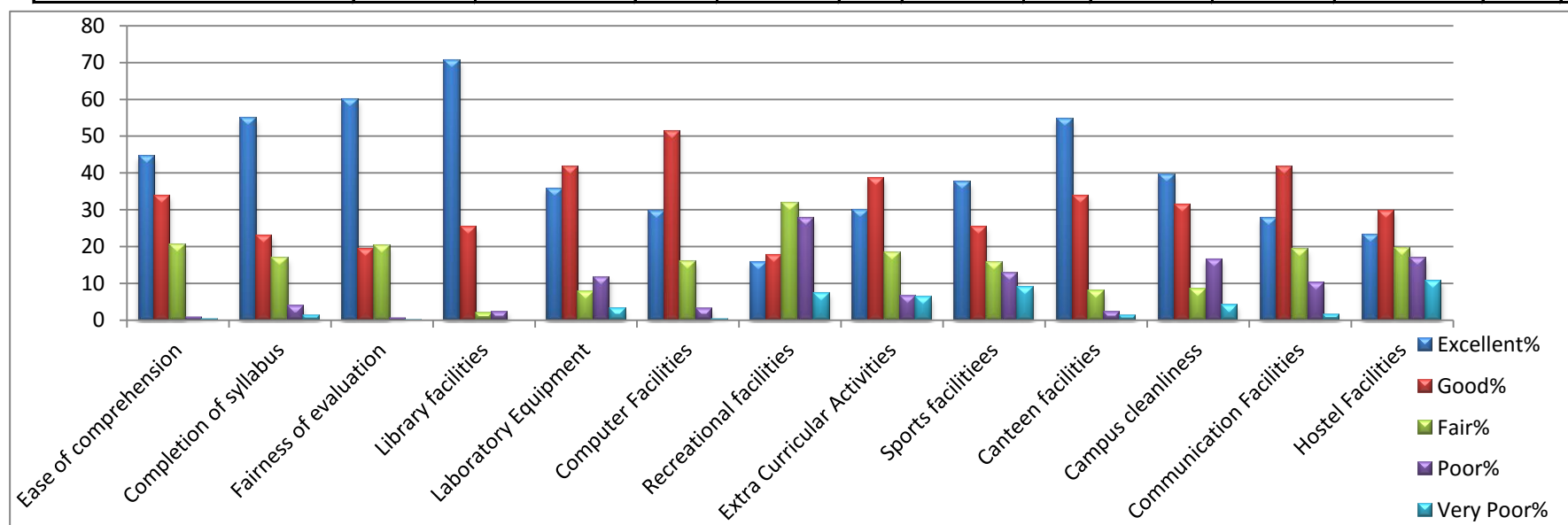


GOVERNENCE



Overall feedback of students (2019-20)

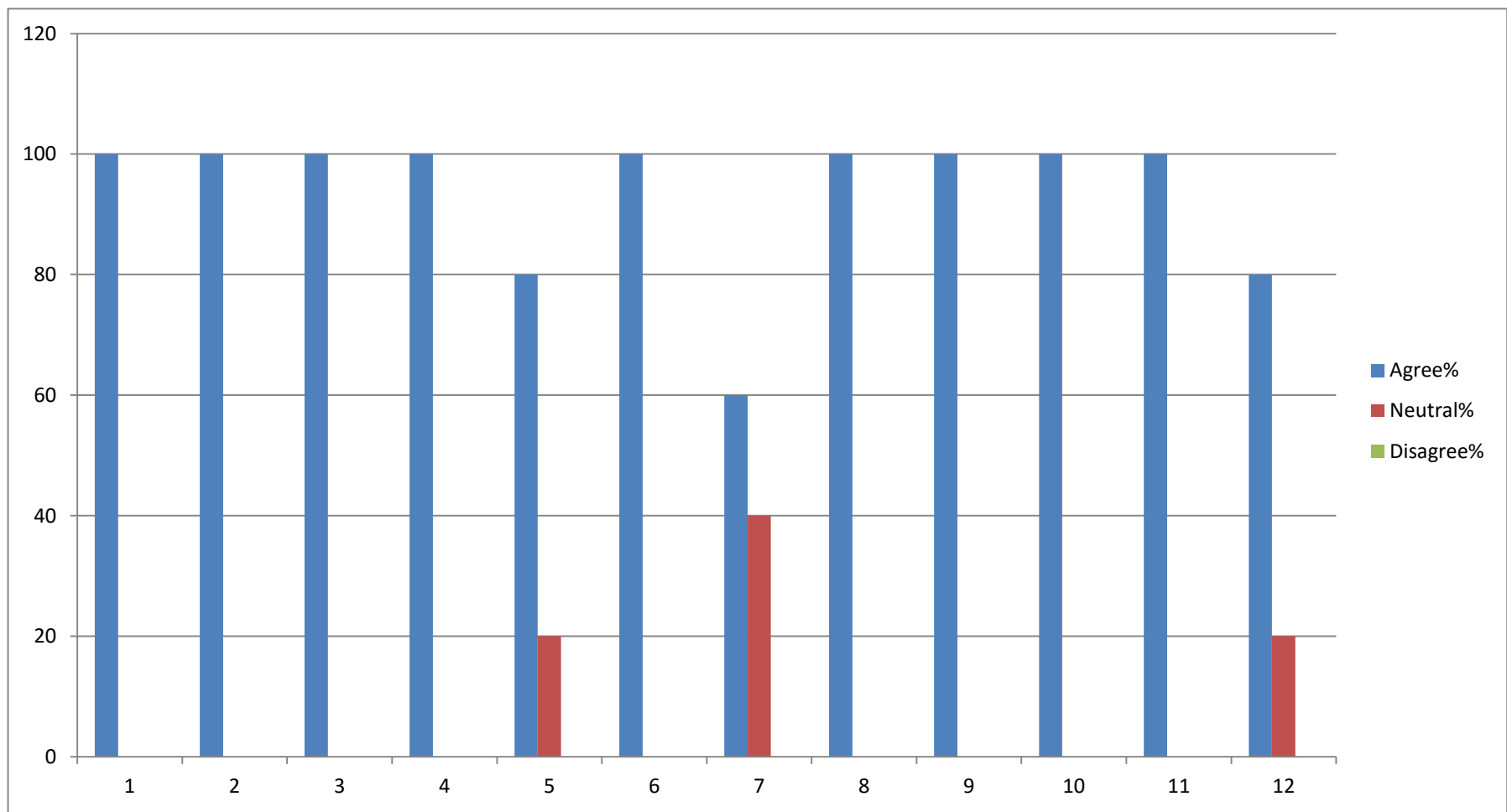
	Excellent	Excellent%	Good	Good%	Fair	Fair%	Poor	Poor%	Very Poor	Very Poor%	Total	
1 Ease of comprehension	234	44.48669202	178	33.8403	108	20.53232	4	0.760456	2	0.38022814	526	100
2 Completion of syllabus	289	54.94296578	121	23.0038	89	16.92015	20	3.802281	7	1.33079848	526	100
3 Fairness of evaluation	315	59.88593156	101	19.20152	106	20.15209	3	0.570342	1	0.19011407	526	100
4 Library facilities	371	70.53231939	133	25.28517	10	1.901141	12	2.281369	0	0	526	100
5 Laboratory Equipment	188	35.74144487	219	41.63498	41	7.794677	61	11.59696	17	3.23193916	526	100
6 Computer Facilities	156	29.65779468	269	51.14068	83	15.77947	16	3.041825	2	0.38022814	526	100
7 Recreational facilities	82	15.58935361	93	17.68061	167	31.74905	145	27.56654	39	7.41444867	526	100
8 Extra Curricular Activities	158	30.03802281	203	38.59316	97	18.44106	35	6.653992	33	6.27376426	526	100
9 Sports facilities	197	37.45247148	133	25.28517	82	15.58935	67	12.73764	47	8.93536122	526	100
10 Canteen facilities	287	54.56273764	178	33.8403	42	7.984791	12	2.281369	7	1.33079848	526	100
11 Campus cleanliness	209	39.7338403	165	31.36882	44	8.365019	87	16.53992	21	3.99239544	526	100
12 Communication Facilities	145	27.56653992	219	41.63498	101	19.20152	53	10.07605	8	1.52091255	526	100
13 Hostel Facilities	122	23.19391635	156	29.65779	103	19.58175	89	16.92015	56	10.6463878	526	100



Management Feedback 19-20

- 1 Governing Body meetings are held on regular basis
- 2 Notice of Governing Body meeting is served before 7 days
- 3 Agenda of ensuing GB meeting and proceedings of previous GB meeting are provided before 7 days
- 4 Meetings of Finance Committee and Purchase Committee are held on regular basis
- 5 Annual budget is placed before GB to recommend for execution
- 6 Financial audit is done regularly by Govt. auditor
- 7 Admission process and results are placed before GB
- 8 Plans for various infrastructural developments of college are passed by GB for implementation
- 9 Plans for academic developments of college are passed by GB for implementation
- 10 Agendas passed by GB are being implemented
- 11 Government orders and policies are implemented by relevant committee as per GB direction
- 12 Recruitment of non-teaching staffs and guest lecturers are done through proper selection procedure

	Agree	Agree%	Neutral	Neutral%	Disagree	Disagree%
1	5	100	0	0	0	0
2	5	100	0	0	0	0
3	5	100	0	0	0	0
4	5	100	0	0	0	0
5	4	80	1	20	0	0
6	5	100	0	0	0	0
7	3	60	2	40	0	0
8	5	100	0	0	0	0
9	5	100	0	0	0	0
10	5	100	0	0	0	0
11	5	100	0	0	0	0
12	4	80	1	20	0	0



Non-teaching staff feedback 2019-20

- 1 The procedures followed in the college are effective.
- 2 The work distribution is fair.
- 3 The work load is reasonable
- 4 The placement of the employees is as per the job requirements.
- 5 The training programmes organized by the college are helpful.
- 6 The infrastructure facilities are supporting the work environment
- 7 The employees are having clear understanding of their roles and responsibilities.
- 8 The superior-subordinate relationships are fine
- 9 The administration respects women employees and treats them well.
- 10 The employees have the opportunity to contribute for process development.
- 11 The employee grievances are settled fairly.
- 12 The college provides opportunities and support to the Staff

SA Strongly Agree

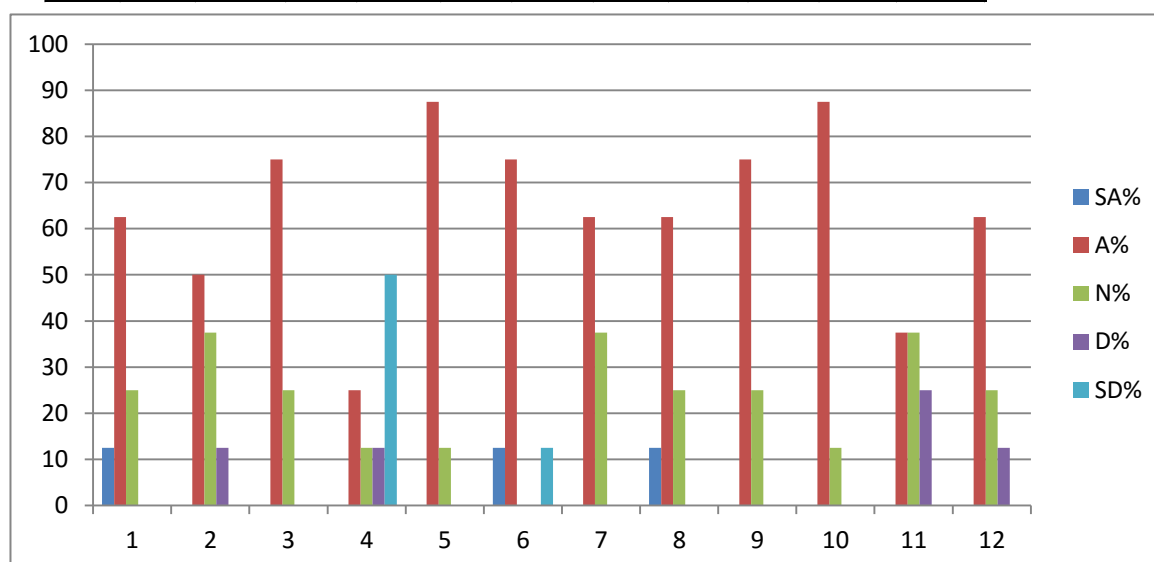
A Agree

N Neutral

D Disagree

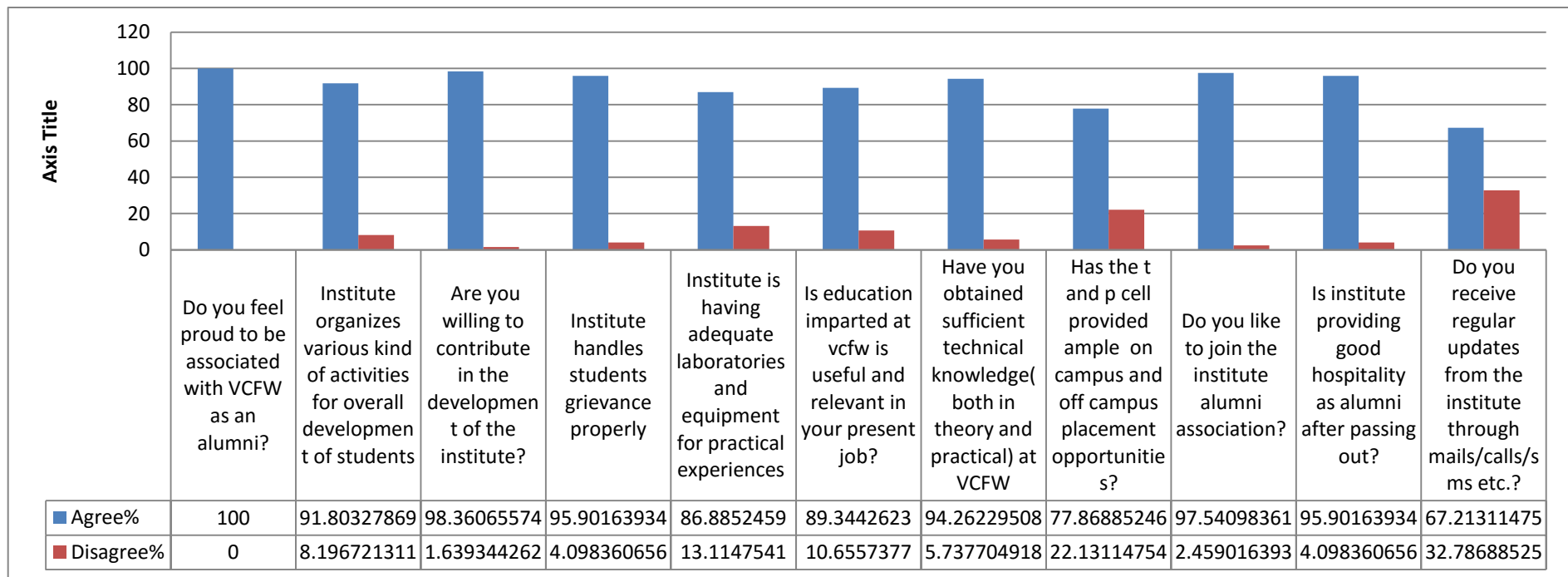
SD Strongly disagree

	SA	SA%	A	A%	N	N%	D	D%	SD	SD%	Total	
1	1	12.5	5	62.5	2	25	0	0	0	0	8	100
2	0	0	4	50	3	37.5	1	12.5	0	0	8	100
3	0	0	6	75	2	25	0	0	0	0	8	100
4	0	0	2	25	1	12.5	1	12.5	4	50	8	100
5	0	0	7	87.5	1	12.5	0	0	0	0	8	100
6	1	12.5	6	75	0	0	0	0	1	12.5	8	100
7	0	0	5	62.5	3	37.5	0	0	0	0	8	100
8	1	12.5	5	62.5	2	25	0	0	0	0	8	100
9	0	0	6	75	2	25	0	0	0	0	8	100
10	0	0	7	87.5	1	12.5	0	0	0	0	8	100
11	0	0	3	37.5	3	37.5	2	25	0	0	8	100
12	0	0	5	62.5	2	25	1	12.5	0	0	8	100



Alumni feedback 19-20

	Agree	Agree%	Disagree	Disagree%	Total	
1 Do you feel proud to be associated with VCFW as an alumni?	122	100	0	0	122	100
2 Institute organizes various kind of activities for overall development of students	112	91.803	10	8.1967213	122	100
3 Are you willing to contribute in the development of the institute?	120	98.361	2	1.6393443	122	100
4 Institute handles students grievance properly	117	95.902	5	4.0983607	122	100
5 Institute is having adequate laboratories and equipment for practical experiences	106	86.885	16	13.114754	122	100
6 Is education imparted at vcfw is useful and relevant in your present job?	109	89.344	13	10.655738	122	100
7 Have you obtained sufficient technical knowledge(both in theory and practical) at VCFW	115	94.262	7	5.7377049	122	100
8 Has the t and p cell provided ample on campus and off campus placement opportunities?	95	77.869	27	22.131148	122	100
9 Do you like to join the institute alumni association?	119	97.541	3	2.4590164	122	100
10 Is institute providing good hospitality as alumni after passing out?	117	95.902	5	4.0983607	122	100
11 Do you receive regular updates from the institute through mails/calls/sms etc.?	82	67.213	40	32.786885	122	100



Parental feedback 19-20

	Excellent	Excellent%	Very Good	Very Good%	Good	Good%	Average	Average%	Total	
Q1	40	45.977011	33	37.93103448	12	13.793	2	2.298851	87	100
Q2	57	65.517241	23	26.43678161	5	5.7471	2	2.298851	87	100
Q3	25	28.735632	51	58.62068966	7	8.046	4	4.597701	87	100
Q4	42	48.275862	33	37.93103448	10	11.494	2	2.298851	87	100
Q5	29	33.333333	41	47.12643678	11	12.644	6	6.896552	87	100
Q6	35	40.229885	25	28.73563218	21	24.138	6	6.896552	87	100
Q7	42	48.275862	34	39.08045977	8	9.1954	3	3.448276	87	100
Q8	33	37.931034	32	36.7816092	16	18.391	6	6.896552	87	100
Q9	35	40.229885	43	49.42528736	6	6.8966	3	3.448276	87	100
Q10	44	50.574713	29	33.33333333	10	11.494	4	4.597701	87	100
Q11	23	26.436782	28	32.18390805	24	27.586	12	13.7931	87	100
Q12	31	35.632184	41	47.12643678	8	9.1954	7	8.045977	87	100
Q13	36	41.37931	37	42.52873563	12	13.793	2	2.298851	87	100
Q14	47	54.022989	31	35.63218391	7	8.046	2	2.298851	87	100
Q15	39	44.827586	41	47.12643678	5	5.7471	2	2.298851	87	100
Q16	38	43.678161	39	44.82758621	7	8.046	3	3.448276	87	100
Q17	19	21.83908	24	27.5862069	28	32.184	16	18.3908	87	100

Parental feedback questions

- 1. Provision of career oriented programs**
- 2. The teaching- learning environment**
- 3. System of monitoring students progress**
- 4. Competence and commitment of faculty**
- 5. Encouragement provided to students for participation in academic forums**
- 6. Response to community needs and extension programs**
- 7. Promotion of self study and attitude of research orientation**
- 8. Infrastructure facilities**
- 9. Learning resources such as library, internet, computer etc**
- 10. Support services like bank, canteen, student centre, career counselling cell etc**
- 11. Enhancement of students personality**
- 12. Institutional sensitivity to change educational, social and market needs**
- 13. Value based education**
- 14. Discipline practices**
- 15. Parental pride and respect for the college**
- 16. Response and communication with the college**
- 17. Spoken english, french, nursing courses, personality development programmes, computer course**

