

Faculty feedback 20-21

I CURRICULUM DESIGN AND DEVELOPMENT

- 1 University is taking care to ensure the currency and relevance of the syllabus
- 2 Employability is given weightage in curriculum design and development
- 3 I am given enough freedom to contribute my ideas on curriculum design and development.
- 4 The system followed by the University for the design and development of curriculum is effective.
- 5 The curriculum has been updated from time to time.

II TEACHING, LEARNING, EVALUATION & RESEARCH

- 1 The admission process adopted by the College is effective.
- 2 The College is able to attract meritorious students.
- 3 Student centered learning resources are available in the College.
- 4 The faculty are updating their knowledge and skills.
- 5 The class work is taking place as per schedule.
- 6 The Central Library is a major source of information.
- 7 The library is utilized optimally by the faculty.
- 8 The library is utilized optimally by the students.
- 9 The library is managed effectively.
- 10 The timings of the Library are convenient.
- 11 The procedure followed for acquiring new books and journals ensures right titles and journals in the library.
- 12 The teaching aids in the department are sufficient and up to date.
- 13 The teachers are supported with adequate learning resources.
- 14 The teachers are encouraged to carry out research.
- 15 The teachers are encouraged to organize seminars/workshops/ symposia/conferences.
- 16 The teachers are encouraged to participate in seminars /workshops/ symposia/conferences.
- 17 The teachers are encouraged to undertake extension service programmes.
- 18 The teachers are encouraged to establish linkage with other institutions.
- 19 The teachers are encouraged to take-up consultancy services.
- 20 The merit of the teachers is recognized.
- 21 The examination system followed by the College is effective.
- 22 The evaluation system followed by the College is effective.

III INFRASTRUCTURE

- 1 The class rooms and furniture available are adequate.
- 2 The toilets are sufficient for faculty and students.
- 3 The buildings and furniture are well maintained.
- 4 The labs are adequately equipped
- 5 The infrastructure available in the department is optimally used.
- 6 Water resources are adequately provided.
- 7 Safe drinking water is available.
- 8 Sports infrastructure is adequate.

IV GOVERNANCE

- 1 The administration is sincerely putting efforts for the development of the institution.
- 2 The administration is accessible.
- 3 The quality initiatives taken up during the last academic year are contributing for improvement.
- 4 The faculty are given freedom to express their opinions.
- 5 The IQAC is working well for promoting quality in the institution.
- 6 The College is providing adequate opportunities and support to the faculty.

I CURRICULUM DESIGN AND DEVELOPMENT

	SA	SA%	A	A%	N	N%	D	D%	SD	SD%	Total	
1	7	13	30	55.6	10	18.5	5	9.26	2	3.7	54	100
2	7	13	17	31.5	20	37	8	14.8	2	3.7	54	100
3	5	9.26	14	25.9	14	25.9	18	33.3	3	5.56	54	100
4	6	11.1	24	44.4	17	31.5	5	9.26	2	3.7	54	100
5	11	20.4	28	51.9	10	18.5	3	5.56	2	3.7	54	100

II TEACHING, LEARNING, EVALUATION & RESEARCH

	SA	SA%	A	A%	N	N%	D	D%	SD	SD%	Total	
1	7	13	36	66.7	10	18.5	0	0	1	1.85	54	100
2	6	11.1	21	38.9	22	40.7	4	7.41	1	1.85	54	100
3	9	16.7	35	64.8	8	14.8	2	3.7	0	0	54	100
4	21	38.9	24	44.4	7	13	2	3.7	0	0	54	100
5	17	31.5	28	51.9	6	11.1	3	5.56	0	0	54	100
6	25	46.3	22	40.7	6	11.1	1	1.85	0	0	54	100
7	6	11.1	37	68.5	7	13	4	7.41	0	0	54	100
8	11	20.4	31	57.4	10	18.5	2	3.7	0	0	54	100
9	25	46.3	24	44.4	5	9.26	0	0	0	0	54	100
10	20	37	27	50	7	13	0	0	0	0	54	100
11	10	18.5	31	57.4	9	16.7	4	7.41	0	0	54	100
12	6	11.1	28	51.9	16	29.6	3	5.56	1	1.85	54	100
13	6	11.1	31	57.4	15	27.8	2	3.7	0	0	54	100
14	8	14.8	29	53.7	12	22.2	2	3.7	3	5.56	54	100
15	13	24.1	29	53.7	11	20.4	0	0	1	1.85	54	100
16	7	13	28	51.9	13	24.1	4	7.41	2	3.7	54	100
17	5	9.26	27	50	19	35.2	2	3.7	1	1.85	54	100
18	5	9.26	27	50	16	29.6	4	7.41	2	3.7	54	100
19	4	7.41	13	24.1	30	55.6	5	9.26	2	3.7	54	100
20	6	11.1	25	46.3	17	31.5	3	5.56	3	5.56	54	100
21	6	11.1	27	50	17	31.5	3	5.56	1	1.85	54	100
22	6	11.1	31	57.4	13	24.1	1	1.85	3	5.56	54	100

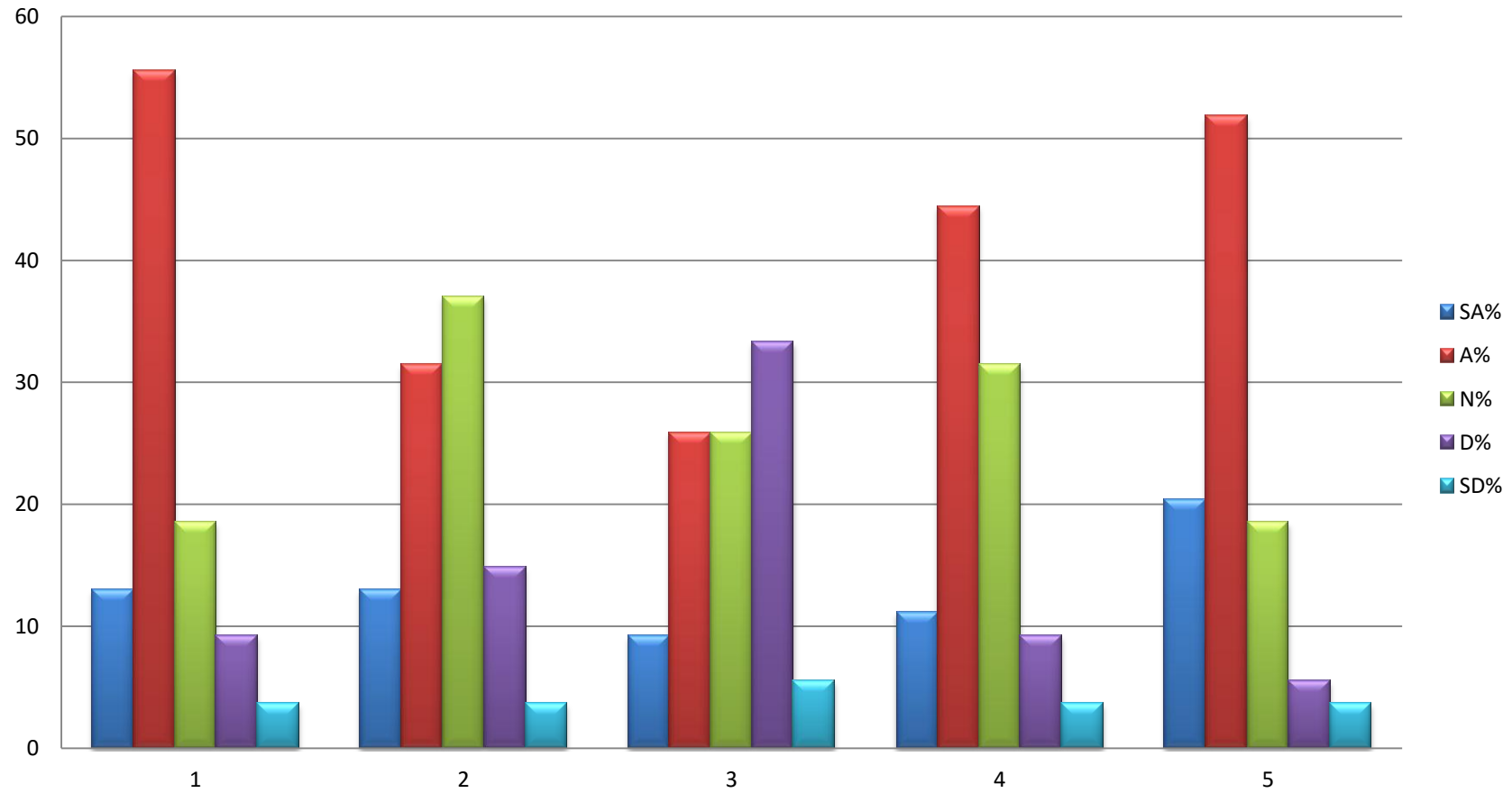
III INFRASTRUCTURE

	SA	SA%	A	A%	N	N%	D	D%	SD	SD%	Total	
1	2	3.7	15	27.8	13	24.1	19	35.2	5	9.26	54	100
2	2	3.7	14	25.9	18	33.3	14	25.9	6	11.1	54	100
3	2	3.7	17	31.5	18	33.3	12	22.2	5	9.26	54	100
4	4	7.55	13	24.5	27	50.9	7	13.2	2	3.77	53	100
5	6	11.1	31	57.4	10	18.5	5	9.26	2	3.7	54	100
6	3	5.56	22	40.7	13	24.1	11	20.4	5	9.26	54	100
7	5	9.26	26	48.1	14	25.9	5	9.26	4	7.41	54	100
8	2	3.7	13	24.1	15	27.8	20	37	4	7.41	54	100

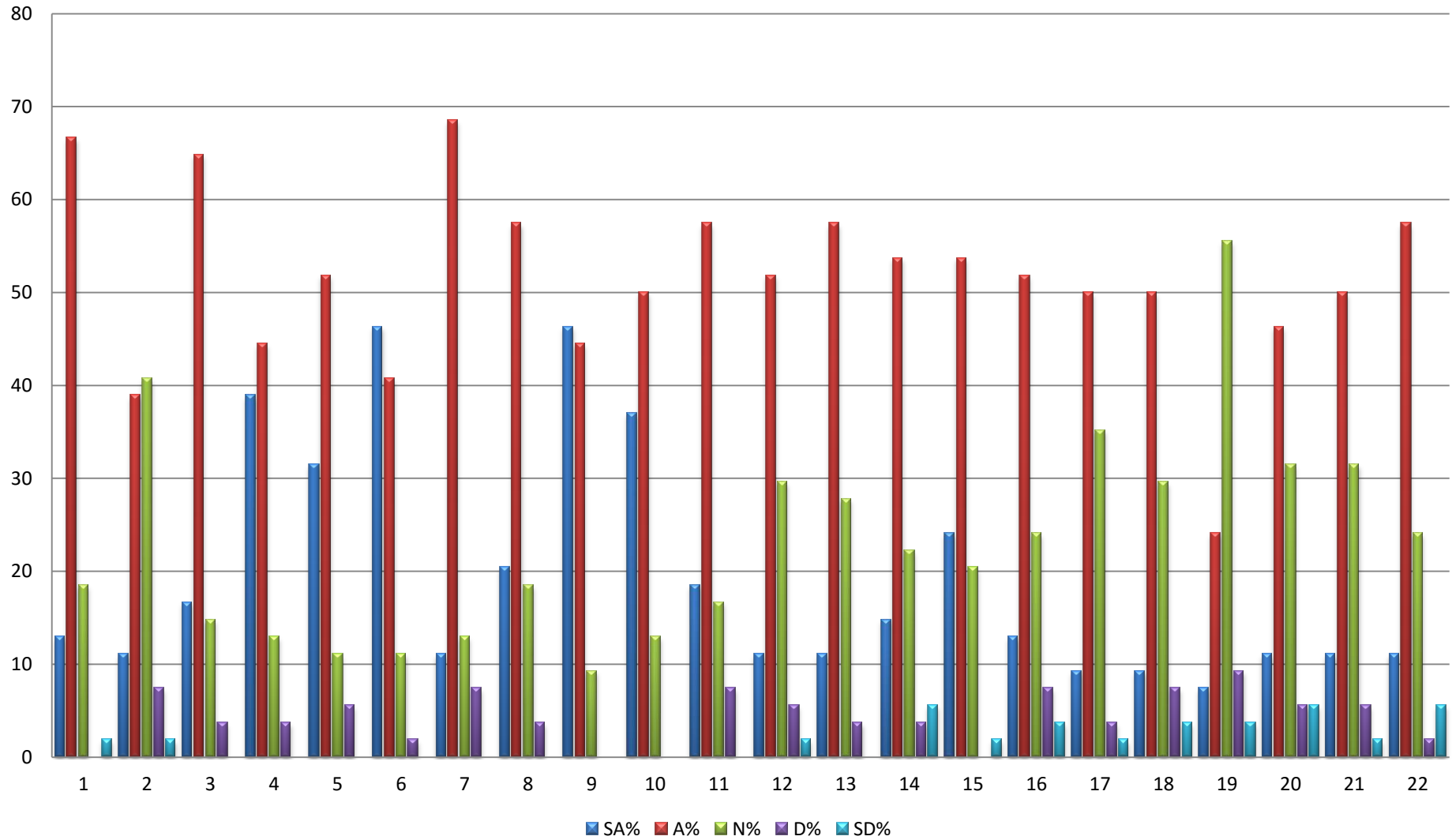
IV GOVERNENCE

	SA	SA%	A	A%	N	N%	D	D%	SD	SD%	Total	
1	7	13	26	48.1	9	16.7	6	11.1	6	11.1	54	100
2	3	5.56	22	40.7	15	27.8	8	14.8	6	11.1	54	100
3	3	5.56	29	53.7	13	24.1	5	9.26	4	7.41	54	100
4	7	13	19	35.2	11	20.4	9	16.7	8	14.8	54	100
5	8	14.8	31	57.4	8	14.8	4	7.41	3	5.56	54	100
6	4	7.41	18	33.3	20	37	6	11.1	6	11.1	54	100

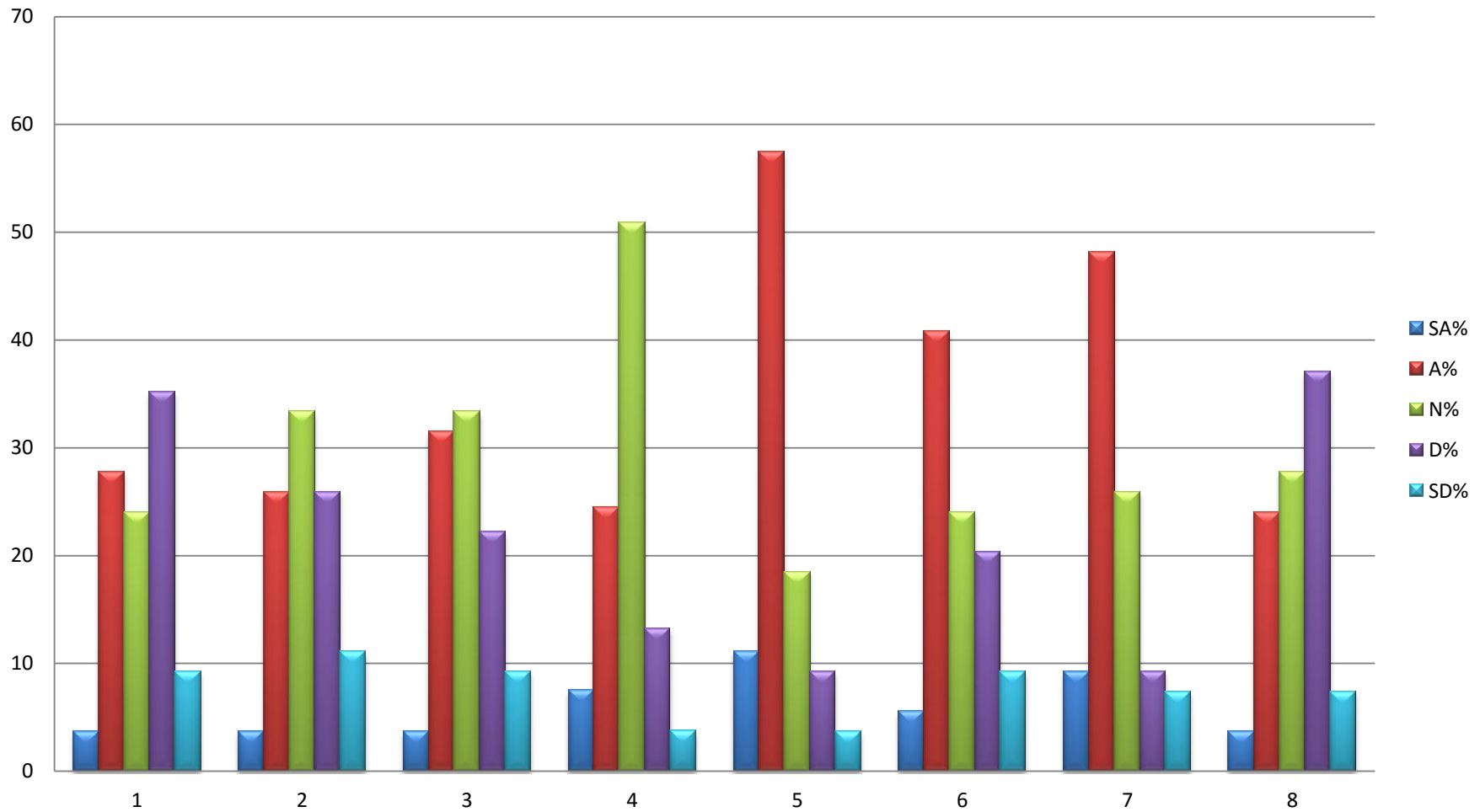
CURRICULUM DESIGN AND DEVELOPMENT



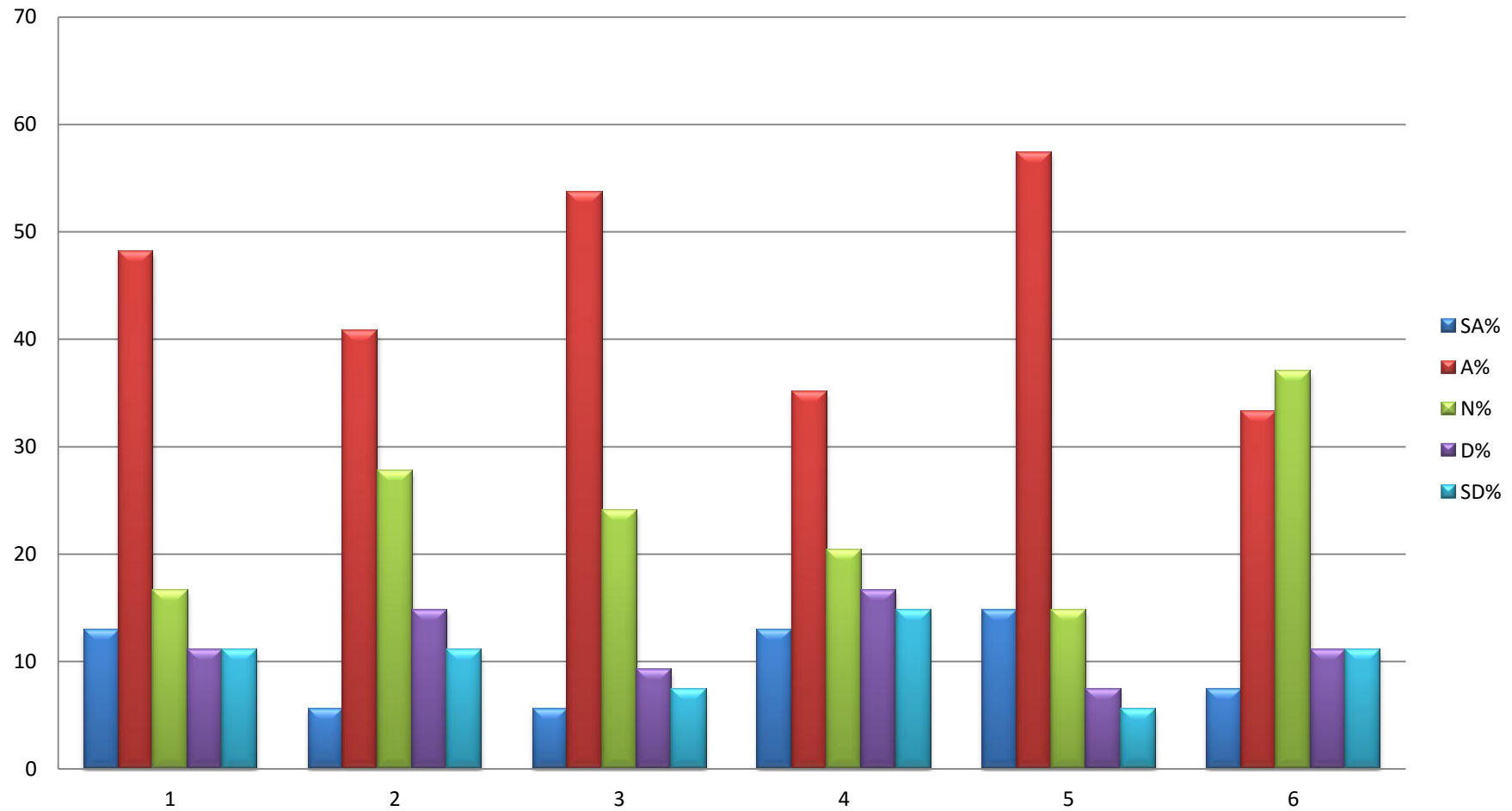
TEACHING, LEARNING, EVALUATION & RESEARCH



INFRASTRUCTURE

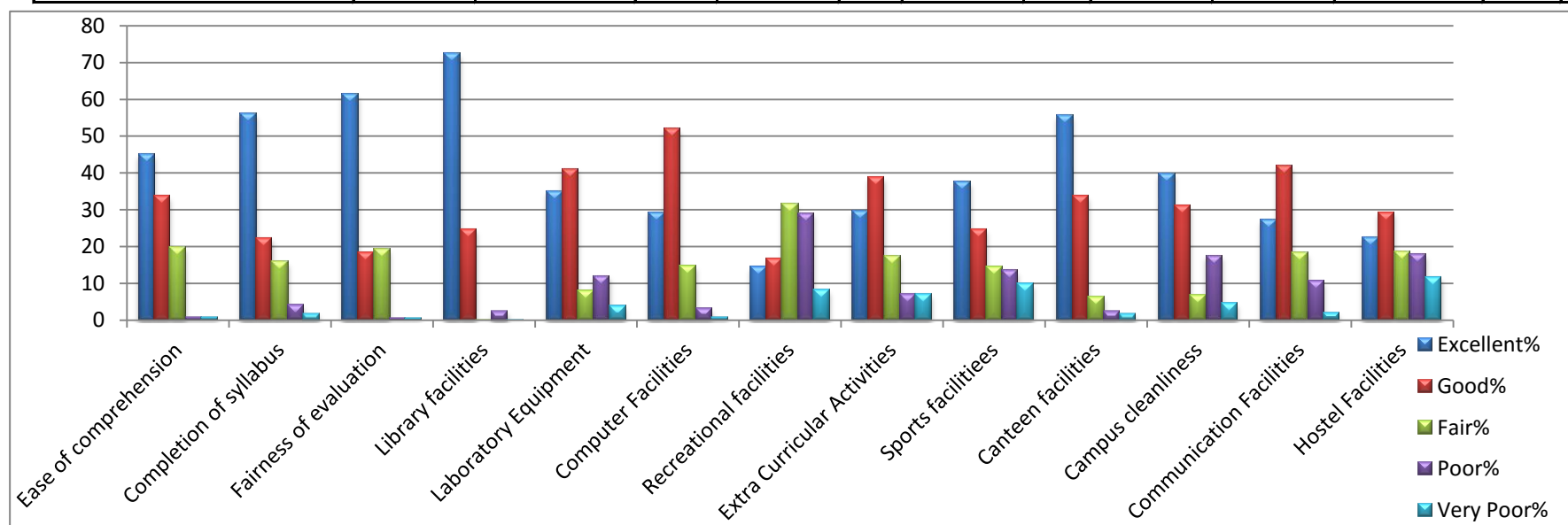


GOVERNENCE



Overall feedback of students (2020-21)

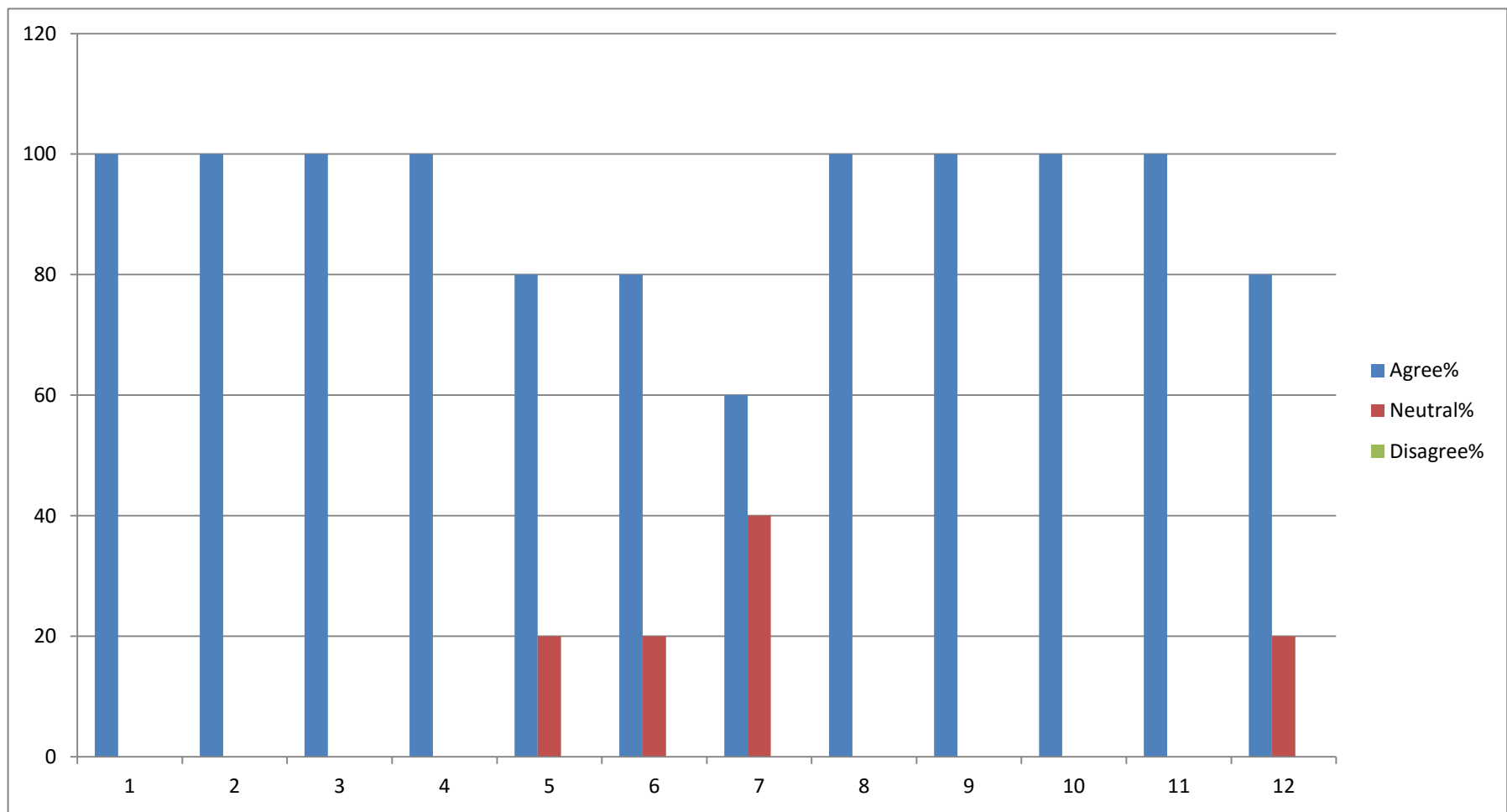
	Excellent	Excellent%	Good	Good%	Fair	Fair%	Poor	Poor%	Very Poor	Very Poor%	Total	
1 Ease of comprehension	224	44.97991968	168	33.73494	98	19.67871	4	0.803213	4	0.80321285	498	100
2 Completion of syllabus	279	56.02409639	111	22.28916	79	15.86345	20	4.016064	9	1.80722892	498	100
3 Fairness of evaluation	305	61.24497992	91	18.27309	96	19.27711	3	0.60241	3	0.60240964	498	100
4 Library facilities	361	72.48995984	123	24.6988	1	0.200803	12	2.409639	1	0.20080321	498	100
5 Laboratory Equipment	178	35.03937008	209	41.14173	41	8.070866	61	12.00787	19	3.74015748	508	100
6 Computer Facilities	146	29.31726908	259	52.00803	73	14.65863	16	3.212851	4	0.80321285	498	100
7 Recreational facilities	72	14.45783133	83	16.66667	157	31.5261	145	29.11647	41	8.23293173	498	100
8 Extra Curricular Activities	148	29.7188755	193	38.75502	87	17.46988	35	7.028112	35	7.02811245	498	100
9 Sports facilities	187	37.5502008	123	24.6988	72	14.45783	67	13.45382	49	9.83935743	498	100
10 Canteen facilities	277	55.62248996	168	33.73494	32	6.425703	12	2.409639	9	1.80722892	498	100
11 Campus cleanliness	199	39.95983936	155	31.1245	34	6.827309	87	17.46988	23	4.6184739	498	100
12 Communication Facilities	135	27.10843373	209	41.96787	91	18.27309	53	10.64257	10	2.00803213	498	100
13 Hostel Facilities	112	22.48995984	146	29.31727	93	18.6747	89	17.87149	58	11.6465863	498	100



Management Feedback 20-21

- 1 Governing Body meetings are held on regular basis
- 2 Notice of Governing Body meeting is served before 7 days
- 3 Agenda of ensuing GB meeting and proceedings of previous GB meeting are provided before 7 days
- 4 Meetings of Finance Committee and Purchase Committee are held on regular basis
- 5 Annual budget is placed before GB to recommend for execution
- 6 Financial audit is done regularly by Govt. auditor
- 7 Admission process and results are placed before GB
- 8 Plans for various infrastructural developments of college are passed by GB for implementation
- 9 Plans for academic developments of college are passed by GB for implementation
- 10 Agendas passed by GB are being implemented
- 11 Government orders and policies are implemented by relevant committee as per GB direction
- 12 Recruitment of non-teaching staffs and guest lecturers are done through proper selection procedure

	Agree	Agree%	Neutral	Neutral%	Disagree	Disagree%
1	5	100	0	0	0	0
2	5	100	0	0	0	0
3	5	100	0	0	0	0
4	5	100	0	0	0	0
5	4	80	1	20	0	0
6	4	80	1	20	0	0
7	3	60	2	40	0	0
8	5	100	0	0	0	0
9	5	100	0	0	0	0
10	5	100	0	0	0	0
11	5	100	0	0	0	0
12	4	80	1	20	0	0



Non-teaching staff feedback 2020-21

- 1 The procedures followed in the college are effective.
- 2 The work distribution is fair.
- 3 The work load is reasonable
- 4 The placement of the employees is as per the job requirements.
- 5 The training programmes organized by the college are helpful.
- 6 The infrastructure facilities are supporting the work environment
- 7 The employees are having clear understanding of their roles and responsibilities.
- 8 The superior-subordinate relationships are fine
- 9 The administration respects women employees and treats them well.
- 10 The employees have the opportunity to contribute for process development.
- 11 The employee grievances are settled fairly.
- 12 The college provides opportunities and support to the Staff

SA Strongly Agree

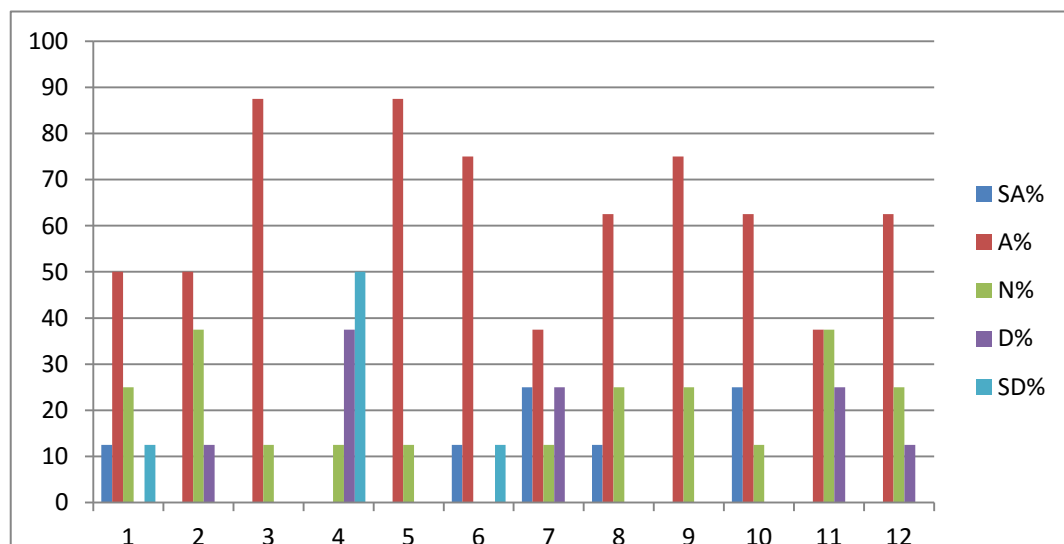
A Agree

N Neutral

D Disagree

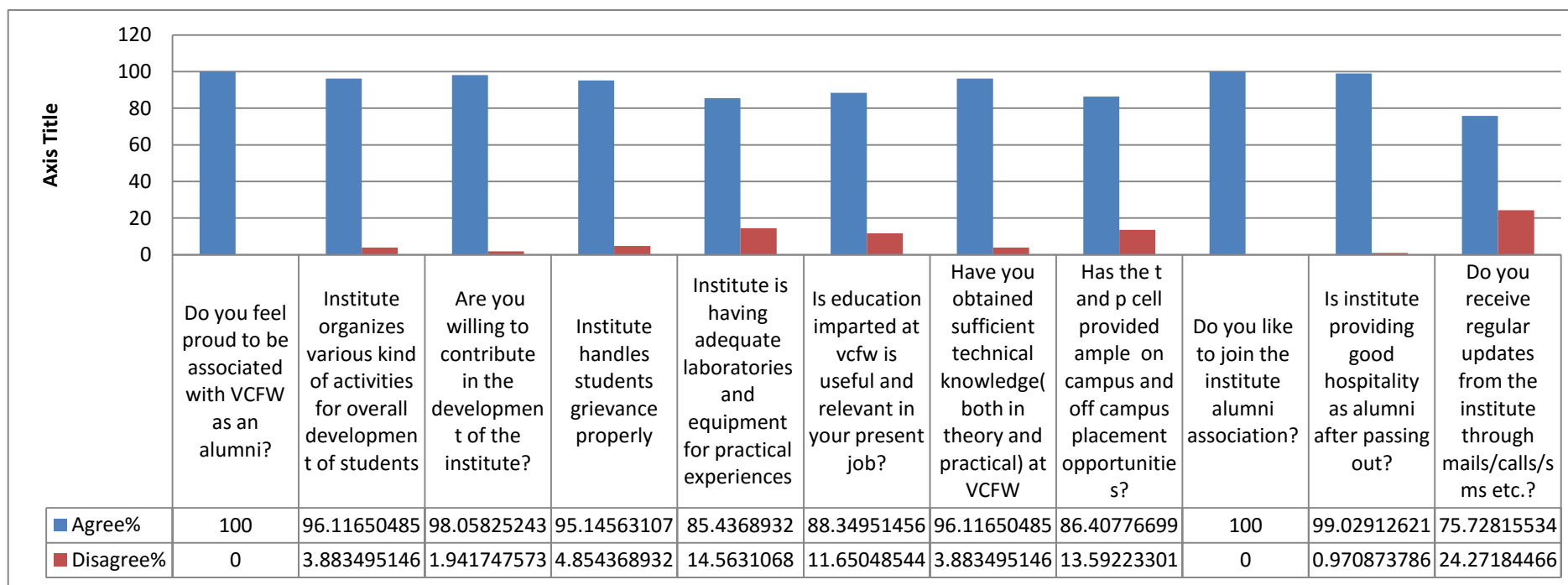
SD Strongly disagree

	SA	SA%	A	A%	N	N%	D	D%	SD	SD%	Total	
1	1	12.5	4	50	2	25	0	0	1	12.5	8	100
2	0	0	4	50	3	37.5	1	12.5	0	0	8	100
3	0	0	7	87.5	1	12.5	0	0	0	0	8	100
4	0	0	0	0	1	12.5	3	37.5	4	50	8	100
5	0	0	7	87.5	1	12.5	0	0	0	0	8	100
6	1	12.5	6	75	0	0	0	0	1	12.5	8	100
7	2	25	3	37.5	1	12.5	2	25	0	0	8	100
8	1	12.5	5	62.5	2	25	0	0	0	0	8	100
9	0	0	6	75	2	25	0	0	0	0	8	100
10	2	25	5	62.5	1	12.5	0	0	0	0	8	100
11	0	0	3	37.5	3	37.5	2	25	0	0	8	100
12	0	0	5	62.5	2	25	1	12.5	0	0	8	100



Alumni feedback 20-21

	Agree	Agree%	Disagree	Disagree%	Total	
1 Do you feel proud to be associated with VCFW as an alumni?	103	100	0	0	103	100
2 Institute organizes various kind of activities for overall development of students	99	96.117	4	3.8834951	103	100
3 Are you willing to contribute in the development of the institute?	101	98.058	2	1.9417476	103	100
4 Institute handles students grievance properly	98	95.146	5	4.8543689	103	100
5 Institute is having adequate laboratories and equipment for practical experiences	88	85.437	15	14.563107	103	100
6 Is education imparted at vcfw is useful and relevant in your present job?	91	88.35	12	11.650485	103	100
7 Have you obtained sufficient technical knowledge(both in theory and practical) at VCFW	99	96.117	4	3.8834951	103	100
8 Has the t and p cell provided ample on campus and off campus placement opportunities?	89	86.408	14	13.592233	103	100
9 Do you like to join the institute alumni association?	103	100	0	0	103	100
10 Is institute providing good hospitality as alumni after passing out?	102	99.029	1	0.9708738	103	100
11 Do you receive regular updates from the institute through mails/calls/sms etc.?	78	75.728	25	24.271845	103	100



Parental feedback 20-21

	Excellent	Excellent%	Very Good	Very Good%	Good	Good%	Average	Average%	Total	
Q1	47	43.119266	40	36.69724771	19	17.431	3	2.752294	109	100
Q2	64	58.715596	30	27.52293578	12	11.009	3	2.752294	109	100
Q3	32	29.357798	65	59.63302752	9	8.2569	3	2.752294	109	100
Q4	49	44.954128	39	35.77981651	17	15.596	4	3.669725	109	100
Q5	36	33.027523	47	43.11926606	16	14.679	10	9.174312	109	100
Q6	42	38.53211	32	29.35779817	27	24.771	8	7.33945	109	100
Q7	49	44.954128	41	37.6146789	14	12.844	5	4.587156	109	100
Q8	40	36.697248	39	35.77981651	19	17.431	11	10.09174	109	100
Q9	41	37.614679	50	45.87155963	11	10.092	7	6.422018	109	100
Q10	49	44.954128	36	33.02752294	15	13.761	9	8.256881	109	100
Q11	29	26.605505	39	35.77981651	29	26.606	12	11.00917	109	100
Q12	38	34.862385	48	44.03669725	14	12.844	9	8.256881	109	100
Q13	43	39.449541	45	41.28440367	19	17.431	2	1.834862	109	100
Q14	53	48.623853	37	33.94495413	17	15.596	2	1.834862	109	100
Q15	46	42.201835	42	38.53211009	15	13.761	6	5.504587	109	100
Q16	45	41.284404	46	42.20183486	15	13.761	3	2.752294	109	100
Q17	27	24.770642	31	28.44036697	34	31.193	17	15.59633	109	100

Parental feedback questions

- 1. Provision of career oriented programs**
- 2. The teaching- learning environment**
- 3. System of monitoring students progress**
- 4. Competence and commitment of faculty**
- 5. Encouragement provided to students for participation in academic forums**
- 6. Response to community needs and extension programs**
- 7. Promotion of self study and attitude of research orientation**
- 8. Infrastructure facilities**
- 9. Learning resources such as library, internet, computer etc**
- 10. Support services like bank, canteen, student centre, career counselling cell etc**
- 11. Enhancement of students personality**
- 12. Institutional sensitivity to change educational, social and market needs**
- 13. Value based education**
- 14. Discipline practices**
- 15. Parental pride and respect for the college**
- 16. Response and communication with the college**
- 17. Spoken english, french, nursing courses, personality development programmes, computer course**

